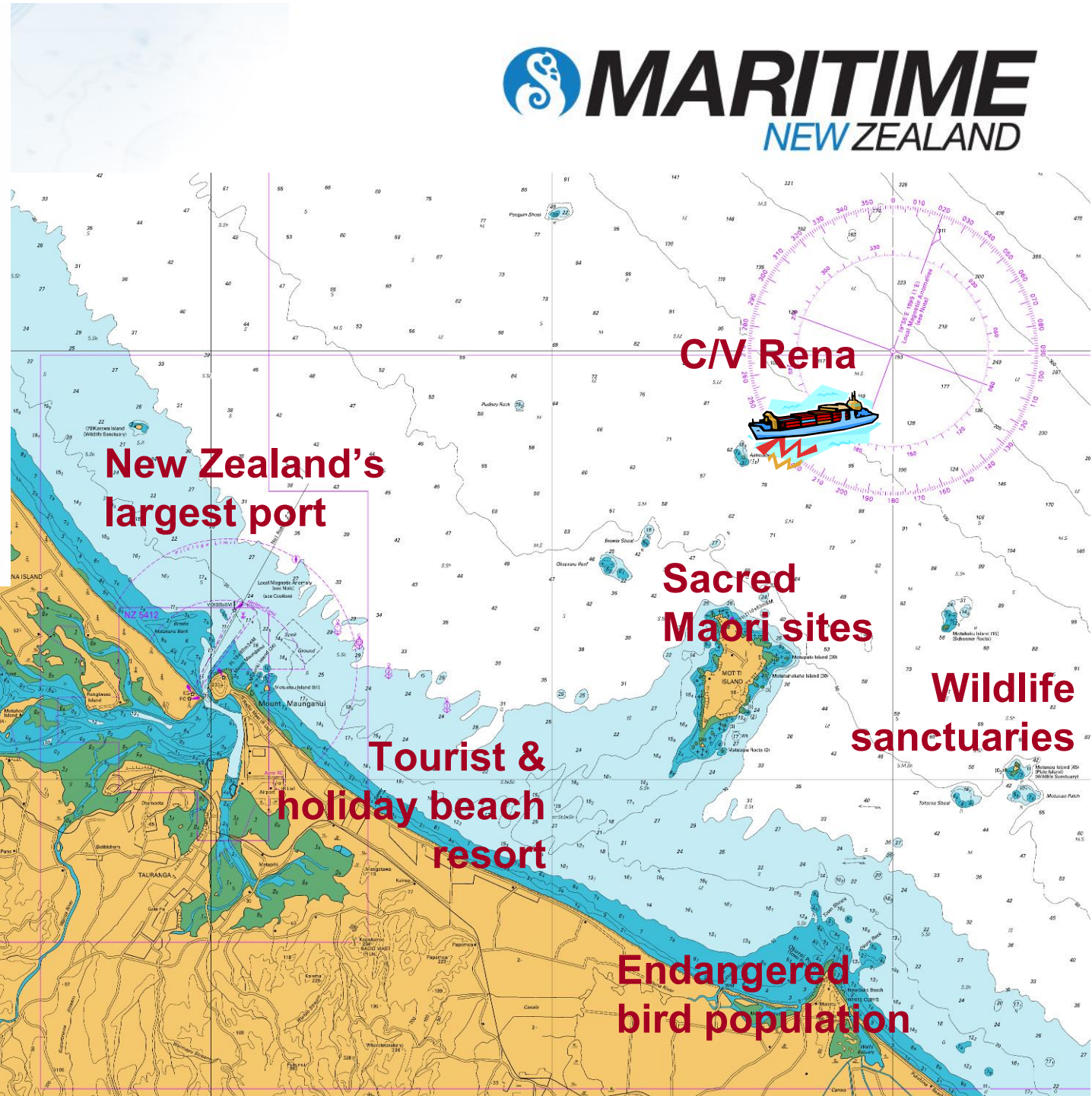
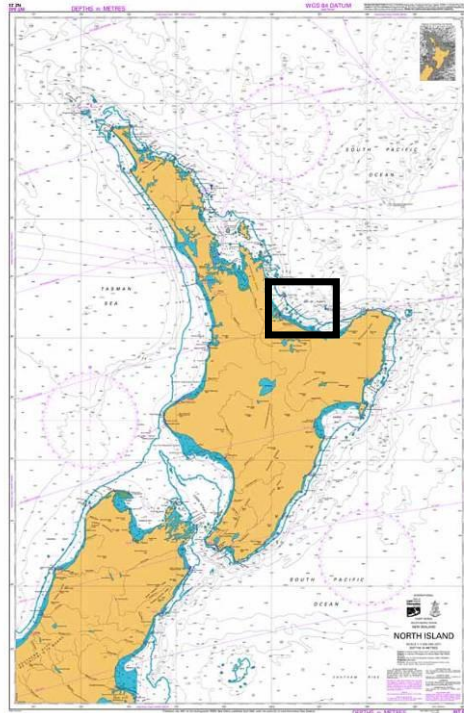


Observations from the *C/V Rena* Grounding

Bruce Anderson
General Manager .
Monitoring and Response
Maritime New Zealand



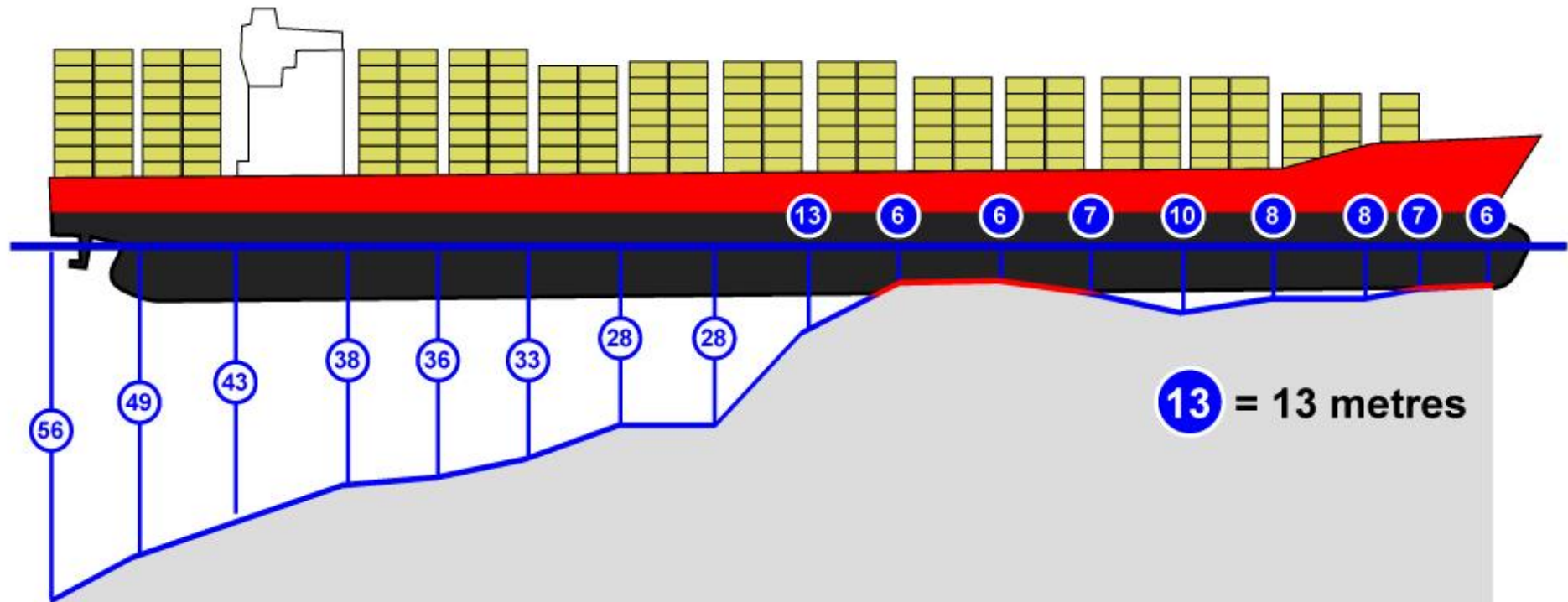


C/V Rena

 **MARITIME**
NEW ZEALAND

Astrolabe Reef

Grounded around 2.20am 5 October
LOF 2011 signed with SCOPIC invoked



Built: 1990

Gross Tonnage: 37209 tons

Flag: Liberia

Owner: Daina Shipping Co

Containers: 1368 including 31 dangerous goods

1713 m³ of heavy fuel oil, 68 m³ of DO



Incident Control Centre (ICC) briefing

Awanuia arrives

 **MARITIME**
NEW ZEALAND





12 October - Vessel moves, salvors evacuated



Crack on the starboard side





Removal of bird life to safety



Container removal



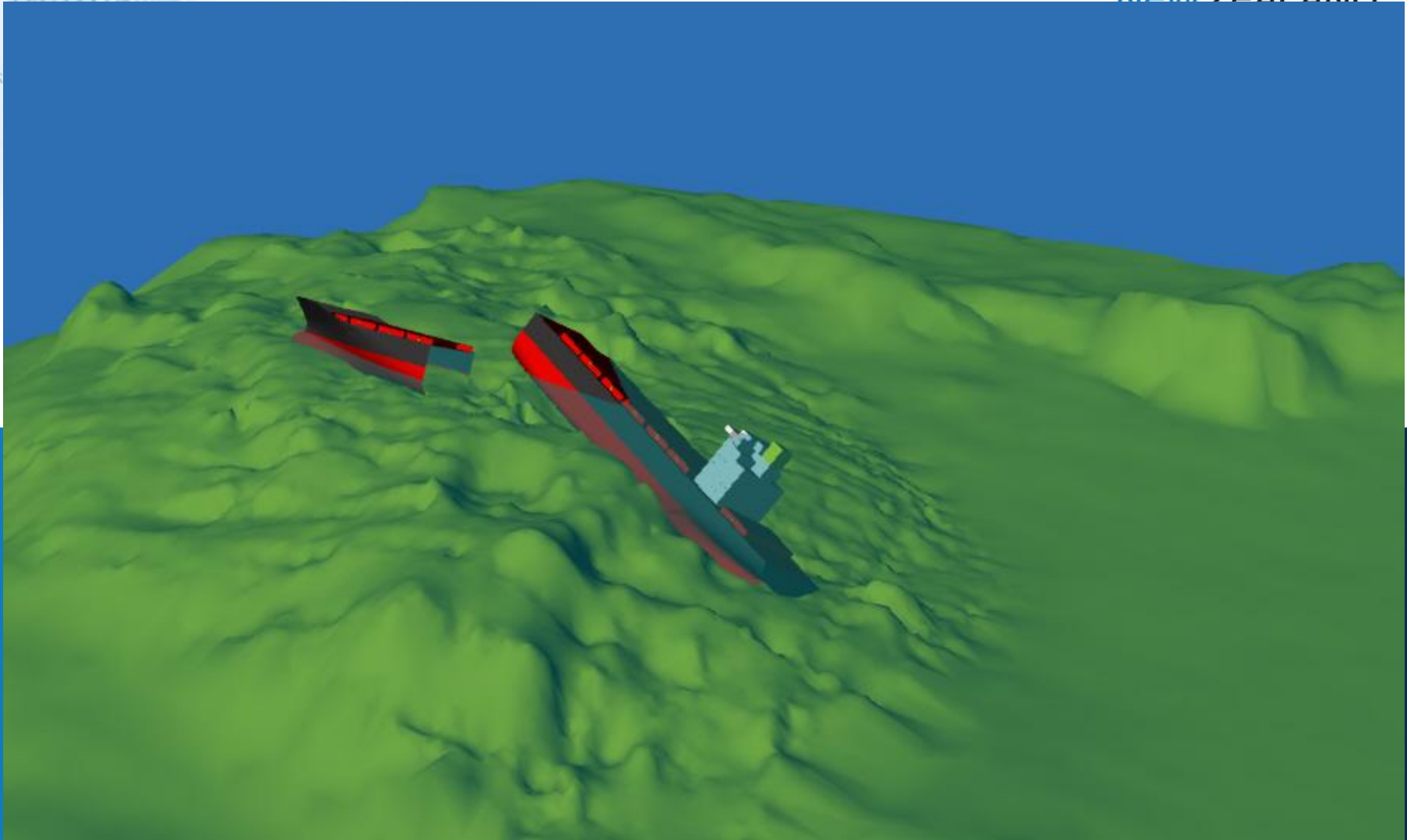


6:13am, 9 January 2012



10.03 am, Tuesday, 10 January 2012

New Zealand Government





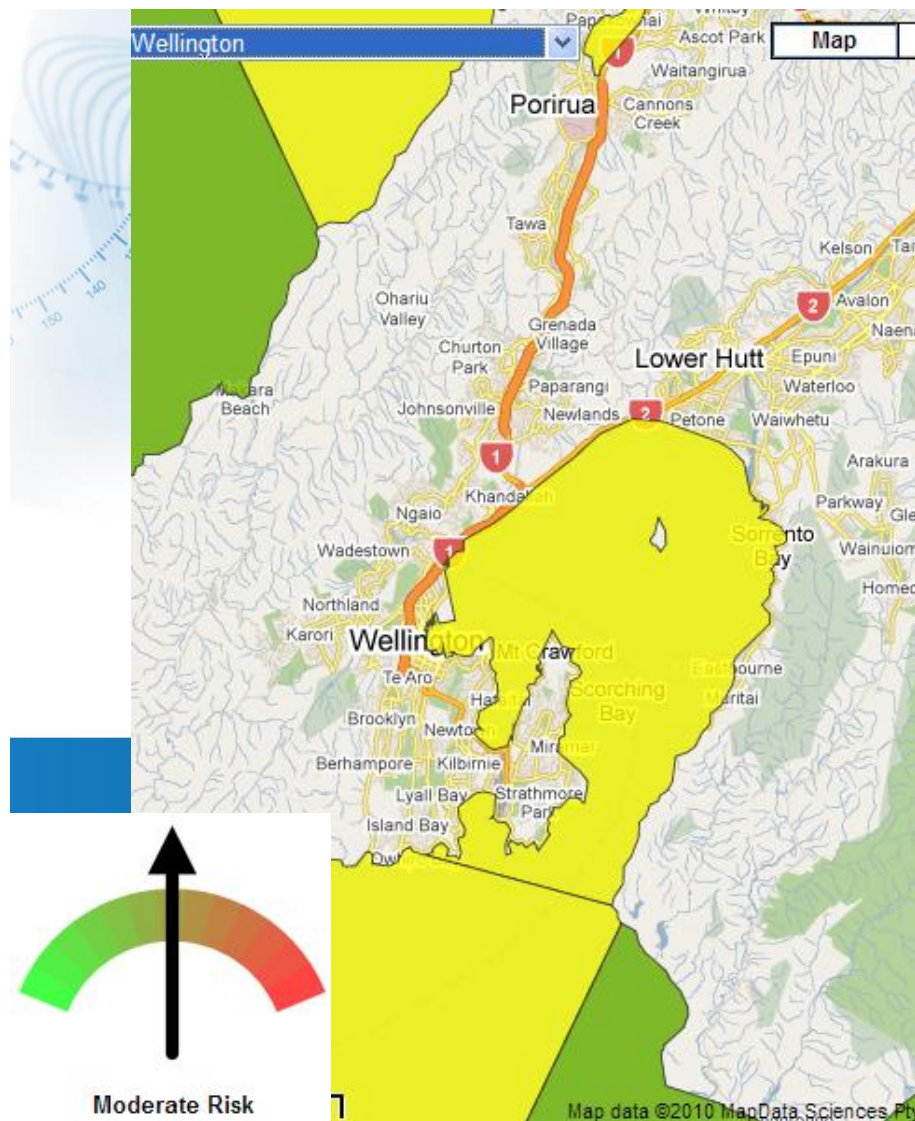
Braemar Howells tagging containers, 9 January 2012



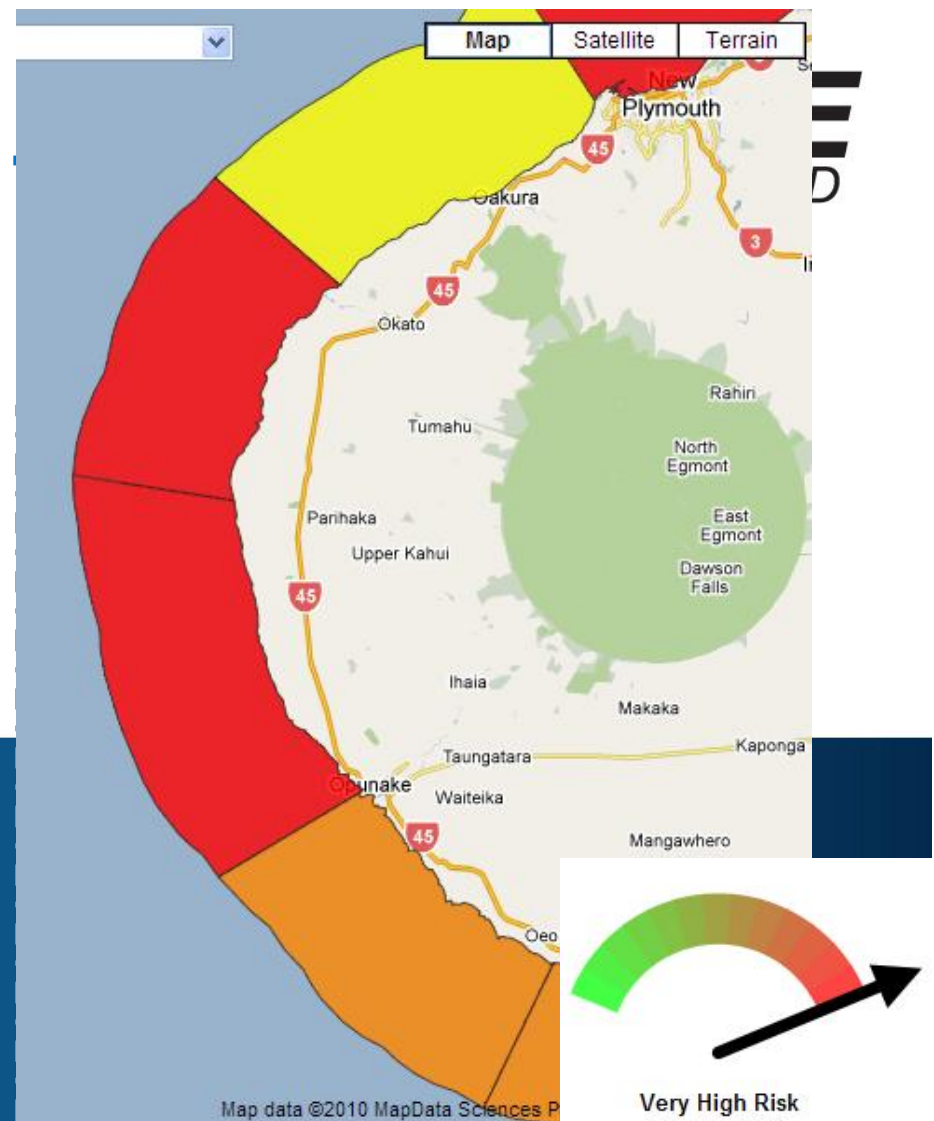


Key Lessons

- “ Use of community in clean up
- “ Open and transparent media engagement
- “ Value of good workable plan
- “ Value of international support



Wellington Harbour



Raho, Taranaki

Risk

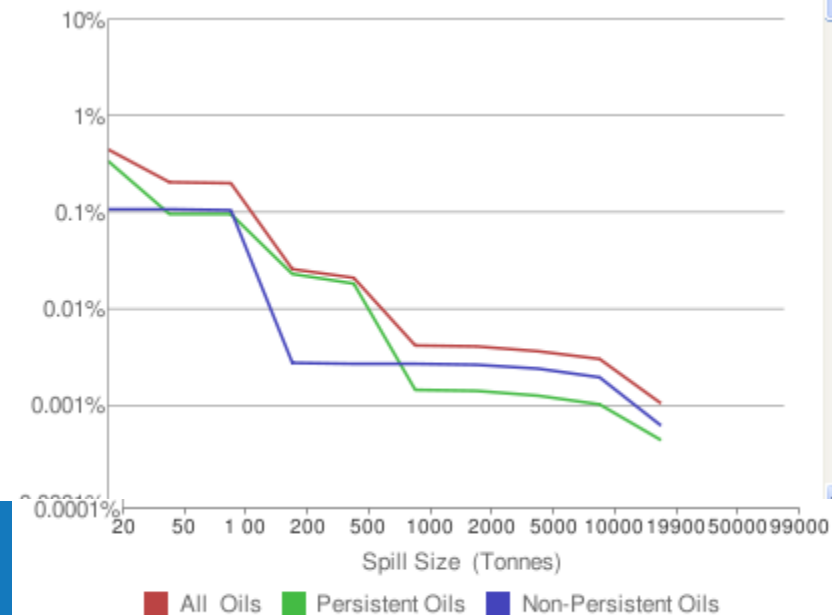
Sensitivity

Sources

Wellington Harbour

Calculated Spill Probability Profile

The following graph shows the oil spill probability profile for this coastal cell. This is the likelihood (expressed as a percentage probability of occurrence per year) of a spill exceeding a particular size (in tonnes) calculated from recent marine vessel activity (6 year sample).



Risk

Sensitivity

Sources

Assessed Environmental Sensitivity

The following table describes the likely effects of oil spills in this area.

| | | |
|-------------------------------------------|---------------------------------------------------------------------------------------------------------------------------------------------------------------------------------------------------------------------------------------|----------|
| Shoreline Character | The predominant coastline within Wellington Harbour is sheltered rocky coasts which due to their low wave energy can allow oil from a spill to accumulate. | High |
| Plants & Animals | This section of coastline forms part of the known habitat for the nationally endangered Black-fronted Tern with a population of approximately 7000 individuals. The Caspian Tern and Reef Heron have also been observed in this area. | Moderate |
| Protected Areas | Matiu/ Somes Island Scientific and Historic Reserve is located at the northern end of Wellington Harbour. | Low |
| Economic | Located within Wellington Harbour is Centre Port. The economic impacts of an oil spill on Centre Port are estimated to be around \$2 million. | Very Low |
| Culture & Heritage | No Mataitai or Taiapure are gazetted for this area. However, coastal resources such as kaimoana are important to both Maori and non-Maori. | Low |
| Social, Amenity & Recreational | Oriental and Worser Bays are patrolled by SLSNZ, while Worser Bay is home to the Worser Bay Surf Life Saving Club. The Harbour is also home to several marinas and is popular amongst boaties. | Low |

Spill Probability

Environmental sensitivity

NZ MARINE OIL SPILL RESPONSE STRATEGY



JULY 2006

NZ MAR
RESPON



marine pollution **RESPONSE** service
 **MARITIME**
NEW ZEALAND

NATIONAL MARINE OIL SPILL CONTINGENCY PLAN

January 2011



CONTROLLED COPY NO. 

**NZ MARINE
RESPONSE**



**NATIONAL MARINE OIL
CONTINGENCY**



CONTROLLED

Marlborough District Council



Marine Oil Spill Contingency Plan

Latest updates:

“ www.maritimenz.govt.nz ”

“ www.boprc.govt.nz ”

“ www.facebook.com/boprc ”

“ www.twitter.com/boprc ”

Thank you

Bruce Anderson

DDI +64 4 494 1212

MOB +64 27 2700572

bruce.anderson@maritimenz.govt.nz