

Nearshore Operations

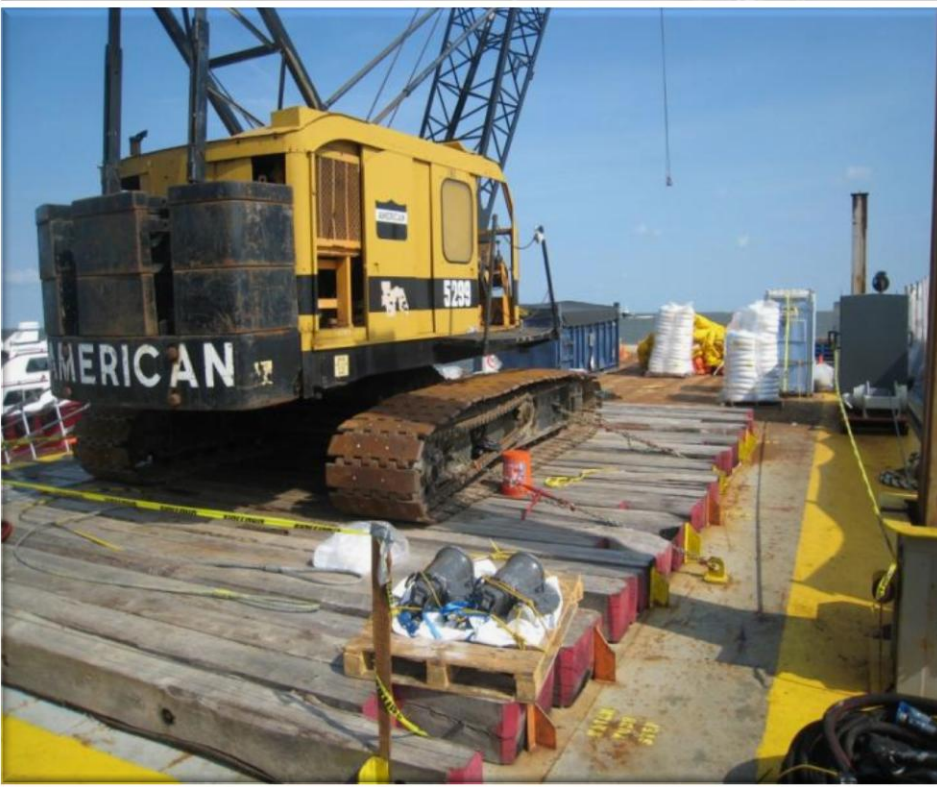
Vessels Of Opportunity - Skimming



Offloading Barges

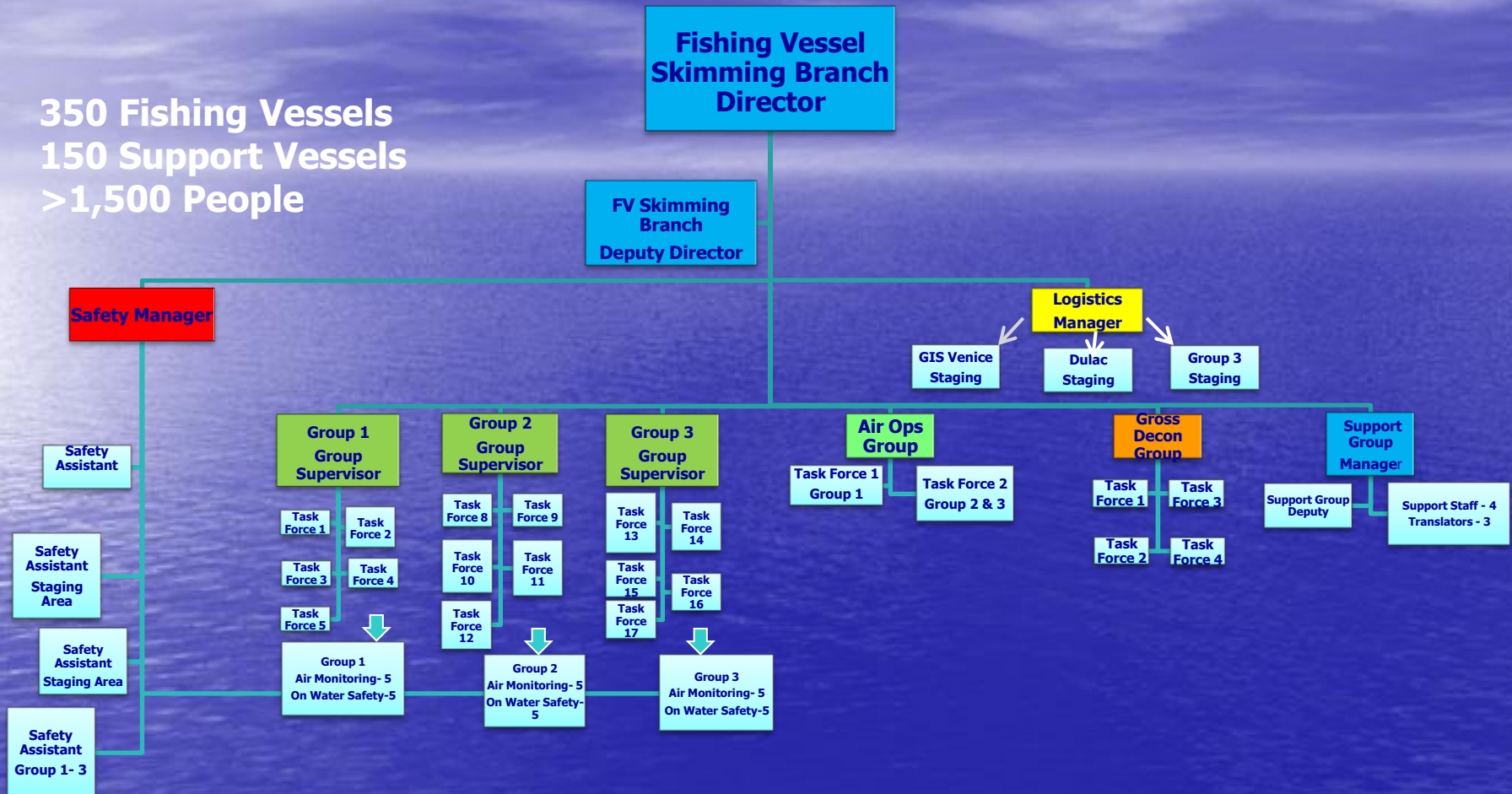


Decontamination Barges



Fishing Vessel Skimming Branch

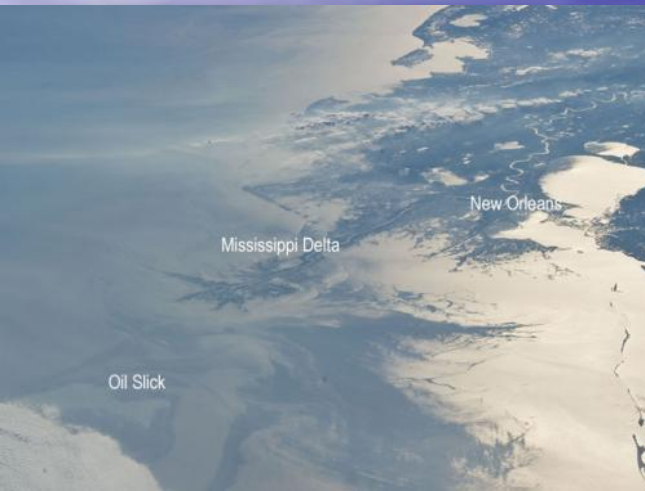
350 Fishing Vessels
150 Support Vessels
>1,500 People



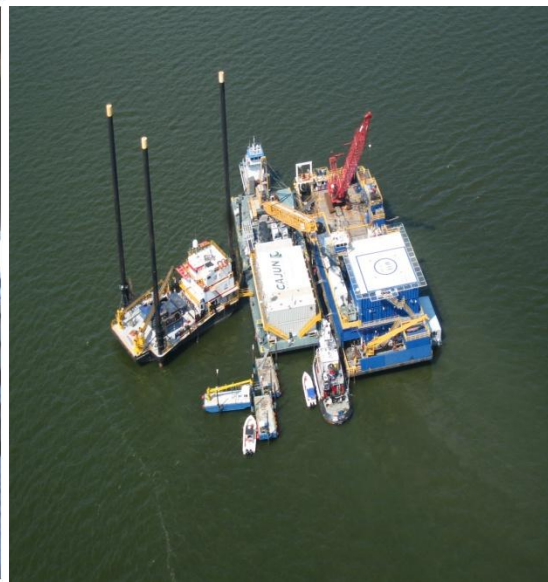
Fishing Vessel Skimming Branch Group Structure



Group Locations



Vessel Of Opportunity Accommodations “Floating Cities” - Louisiana



Staging Area Setup For Equipment Installation



Selecting Area



Cleaning Area



Equipment Arriving



Vessels Arriving

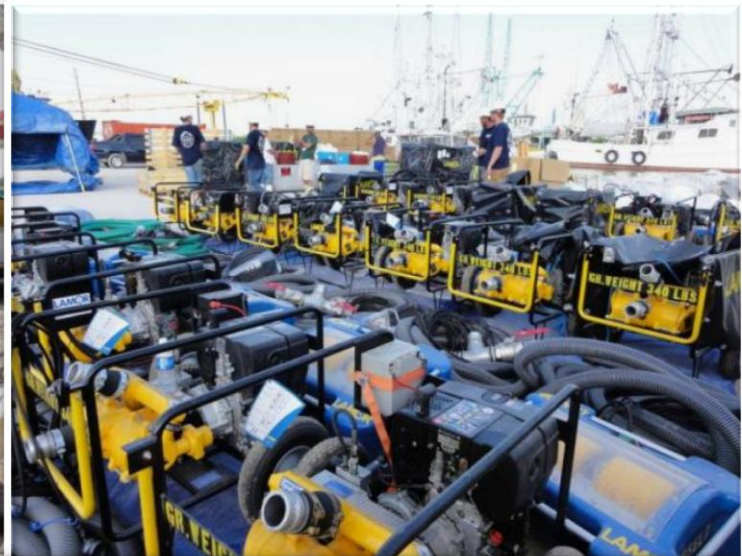
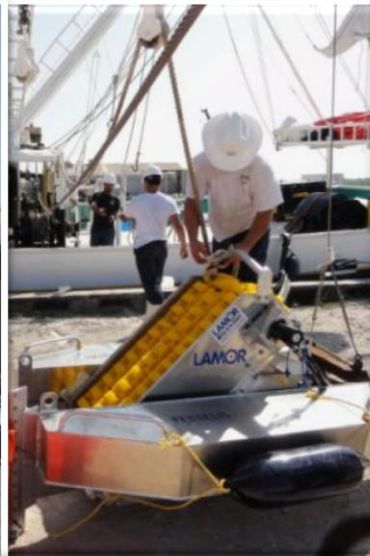


Equipment Commissioning



Installation of Systems

Staging Area Logistics



Equipment Installation

Skimmers / Pumps / Power packs / Sweeping booms / Oil storage tanks



Typical Vessel Configuration



6-8 Vessel Installations Per Day



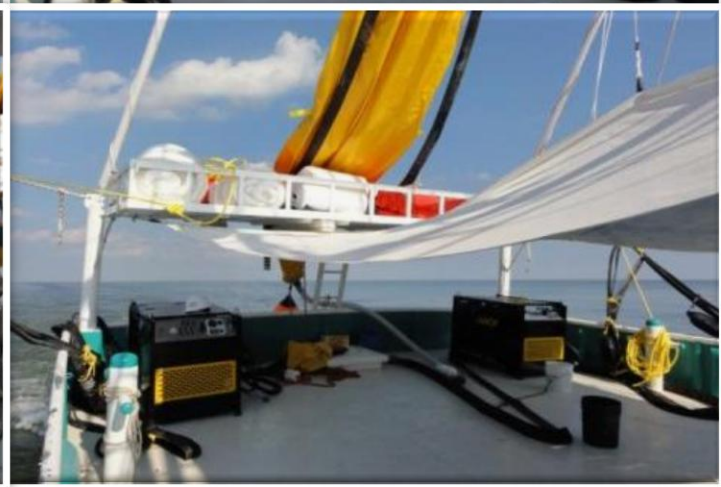
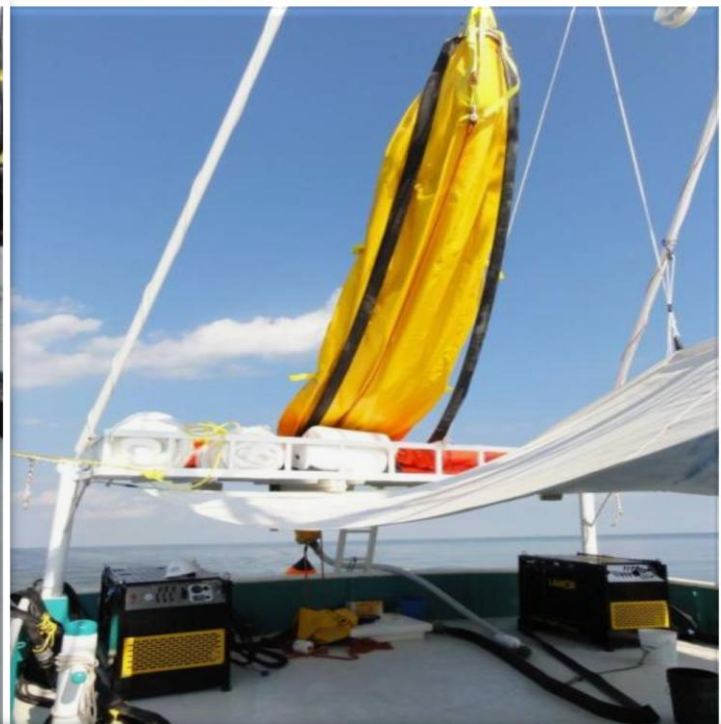
Equipment Installation

Skimmers / Pumps / Power packs / Sweeping booms / Oil storage tanks



Equipment Installation

Power packs and oil storage tanks



Installation Testing

Skimming systems



Equipment Maintenance

Field support



Field Support Offloading barges



What Went Well

- Rapid Engagement (Training, Contracting, Outfitting) of Hundreds of Local Vessels and Thousands of Fisherman in the Response Effort in a System Built From Scratch
- Tremendous

Teamwork



Success “Challenges”

- **Scale of Operations**
- **Availability of Resources, Critical Resources**
- **Trained/Skilled operators, Time To Train**
- **Logistics and Operations Functions Initially Combined**
- **Congested Air Space, Identification From The Air**
- **Verifications of Training**

Program Considerations

- **Essential Program Elements:**
 - **Contractual**
 - **Training, Drills and Exercises**
 - **Safety**
- **Data base of vessels**
- **Equipment Inventories and Availability**
- **Pre Locate Staging Areas**
- **Pre identify response wide requirements**

All Can and Should Be Done Ahead of Time!



Thank You

Questions ?