

IPIECA

Incident Management Systems (IMS)

- What it is and why it works
- ICS: a widely used type of IMS
- Is it right for you?

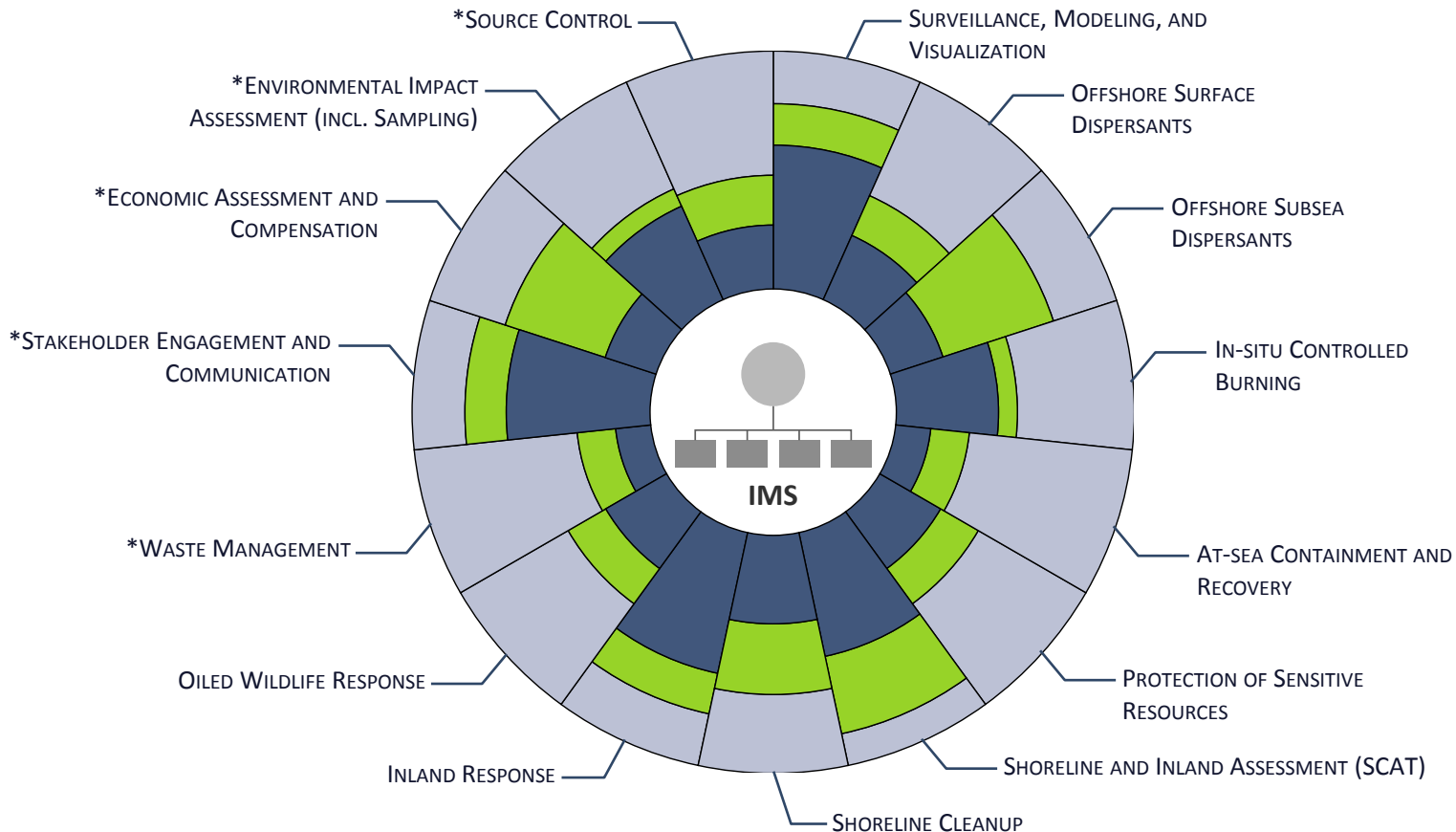


THE GLOBAL OIL AND GAS
INDUSTRY ASSOCIATION
FOR ENVIRONMENTAL
AND SOCIAL ISSUES

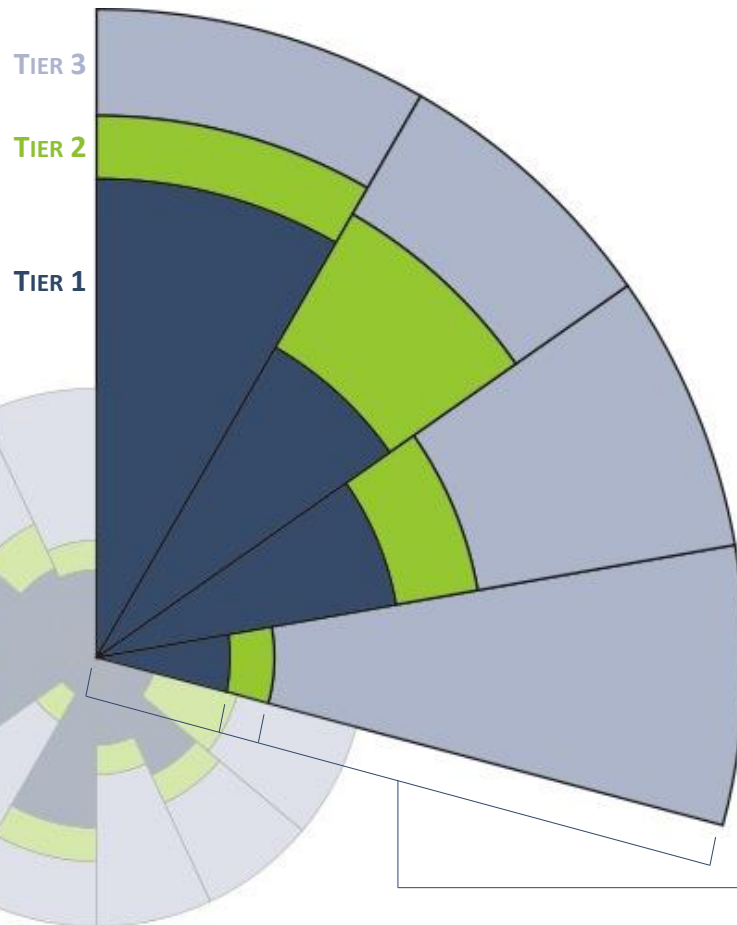
www.ipieca.org

Understanding the relationship between IMS and TPR: the new Tiered Preparedness and Response model

THE FOLLOWING 15 CAPABILITIES ESSENTIALLY REPRESENT THE SCOPE OF TIERED PREPAREDNESS AND RESPONSE:



THE TIERS REPRESENT THE VARIOUS LEVELS OF RESOURCE CAPACITY REQUIRED TO RESPOND TO A SPECIFIC FACILITY OR REGION, AND DO NOT REPRESENT QUANTITATIVE MEASUREMENTS OF CAPACITY



TIER 1: RESOURCES NECESSARY TO HANDLE A LOCAL SPILL AND/OR PROVIDE AN INITIAL RESPONSE

TIER 2: SHARED RESOURCES NECESSARY TO SUPPLEMENT A TIER 1 RESPONSE

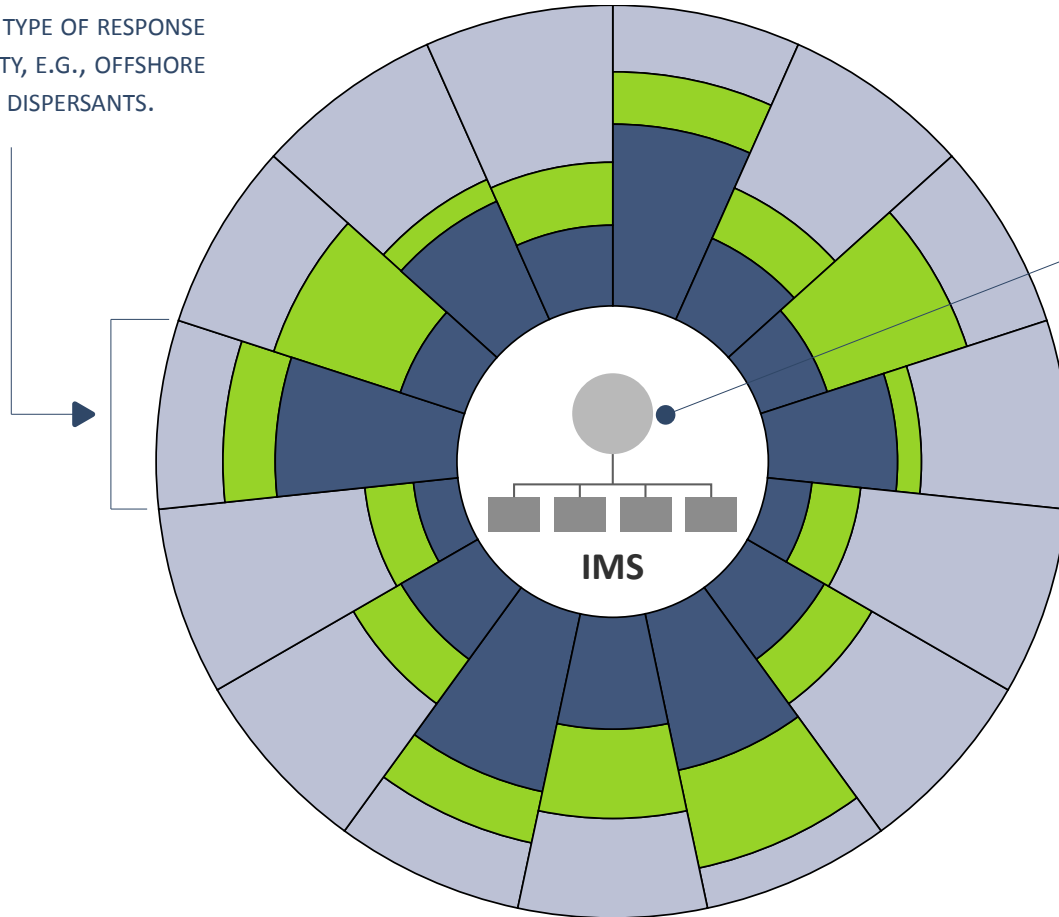
TIER 3: GLOBAL RESOURCES NECESSARY FOR SPILLS THAT REQUIRE A SUBSTANTIAL EXTERNAL RESPONSE DUE TO INCIDENT SCALE, COMPLEXITY, AND/OR IMPACT POTENTIAL

EACH WEDGE REPRESENTS A SPECIFIC TYPE OF RESPONSE CAPABILITY, E.G., OFFSHORE SURFACE DISPERSANTS CAPABILITY

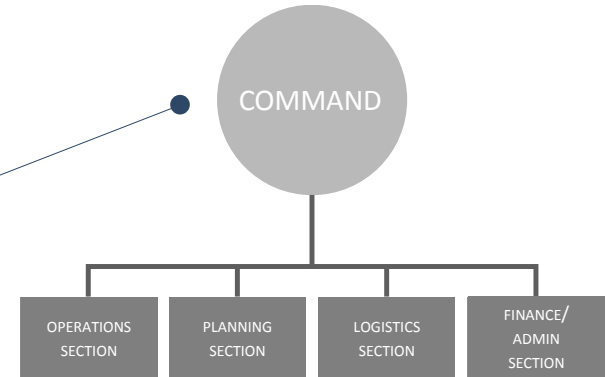
EACH WEDGE IS SUBDIVIDED TO ILLUSTRATE THAT RESOURCES FROM THE TIERS MAY BE COMBINED TO PROVIDE THE NEEDED CAPACITY FOR EACH RESPONSE CAPABILITY

Understanding the relationship between IMS and TPR: the new Tiered Preparedness and Response model

EACH WEDGE REPRESENTS A SPECIFIC TYPE OF RESPONSE CAPABILITY, E.G., OFFSHORE SURFACE DISPERSANTS.



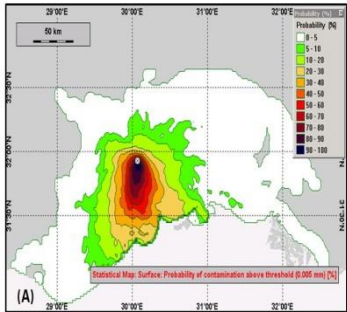
INCIDENT MANAGEMENT SYSTEM



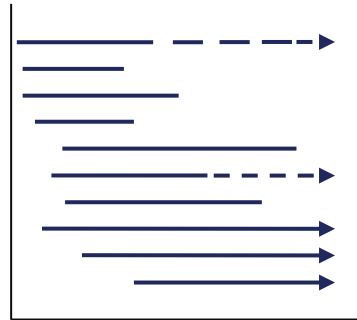
THE INCIDENT MANAGEMENT SYSTEM (IMS) SYMBOL IS AT THE CENTER OF THE MODEL TO INDICATE THAT INCIDENT MANAGEMENT IS A CENTRAL CONSIDERATION WHEN PLANNING FOR POTENTIAL INCIDENTS USING THE TIERED PREPAREDNESS AND RESPONSE APPROACH.

OSPR Good Practice: preparedness

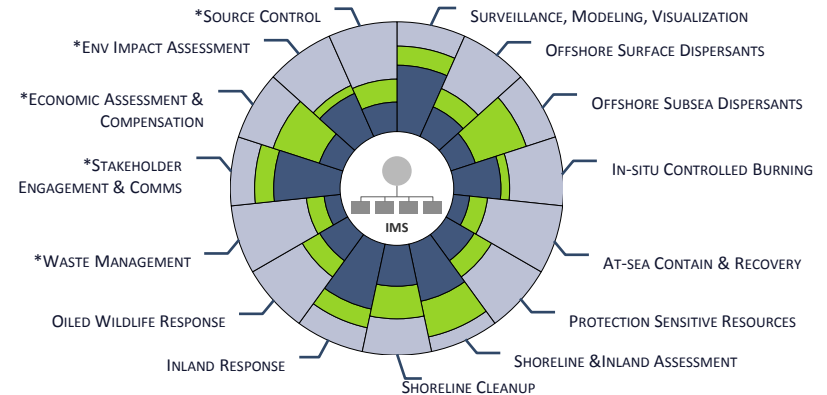
Plans



Oil Spill Risks
Planning Scenarios



Response Strategy
Optimal Actions - SIMA

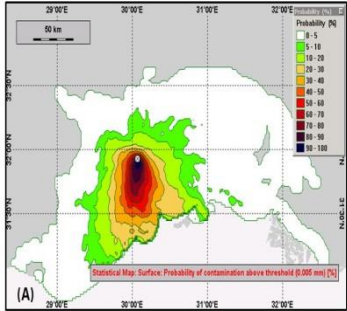


Response Capability
Tiered – What, How Much, By When

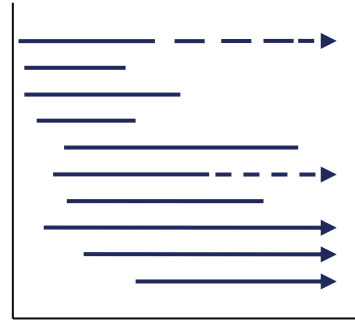
Stakeholder Engagement

Training and Exercises

OSPR Good Practice: response

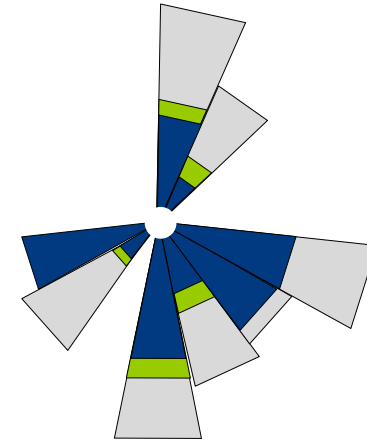


Spill Scenario



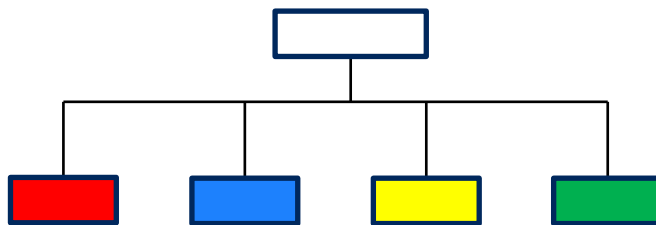
Response Strategy

Combination of Response Options



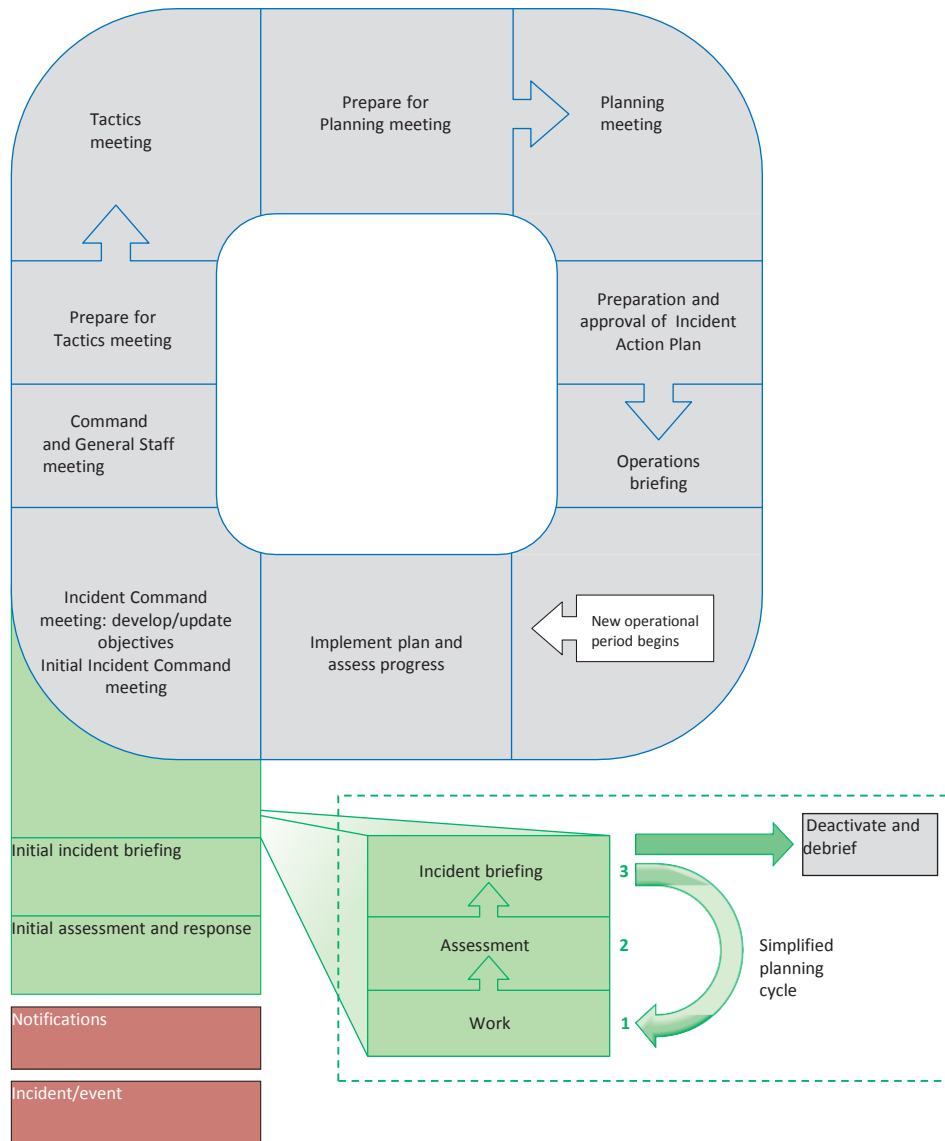
Cascaded Response Resources

Incident Management System

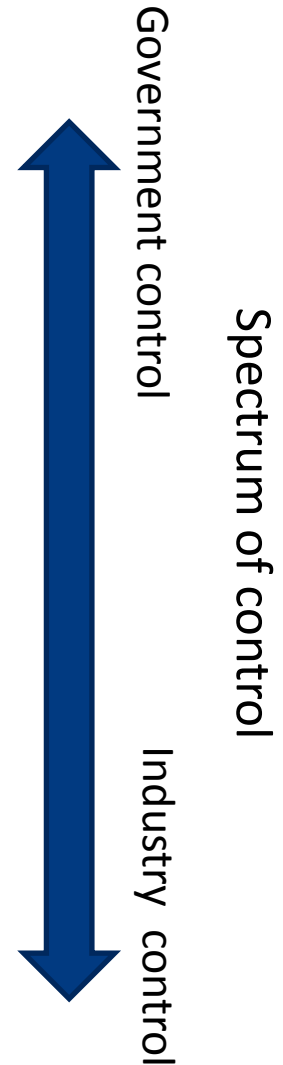
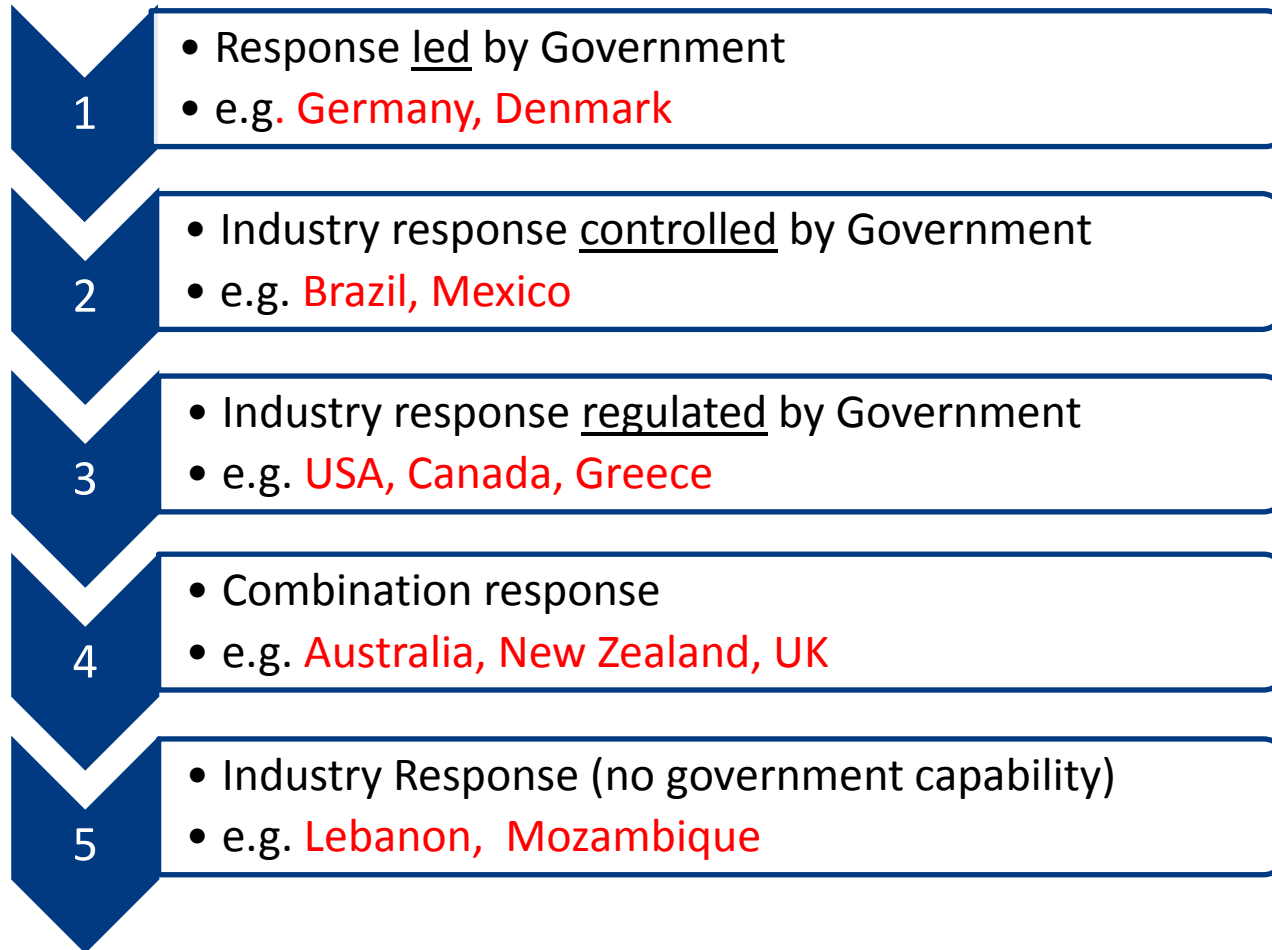


- Situational Awareness
- Stakeholder Engagement
- Decision-making
- Resource provisions
- Response Action

The Planning "P"

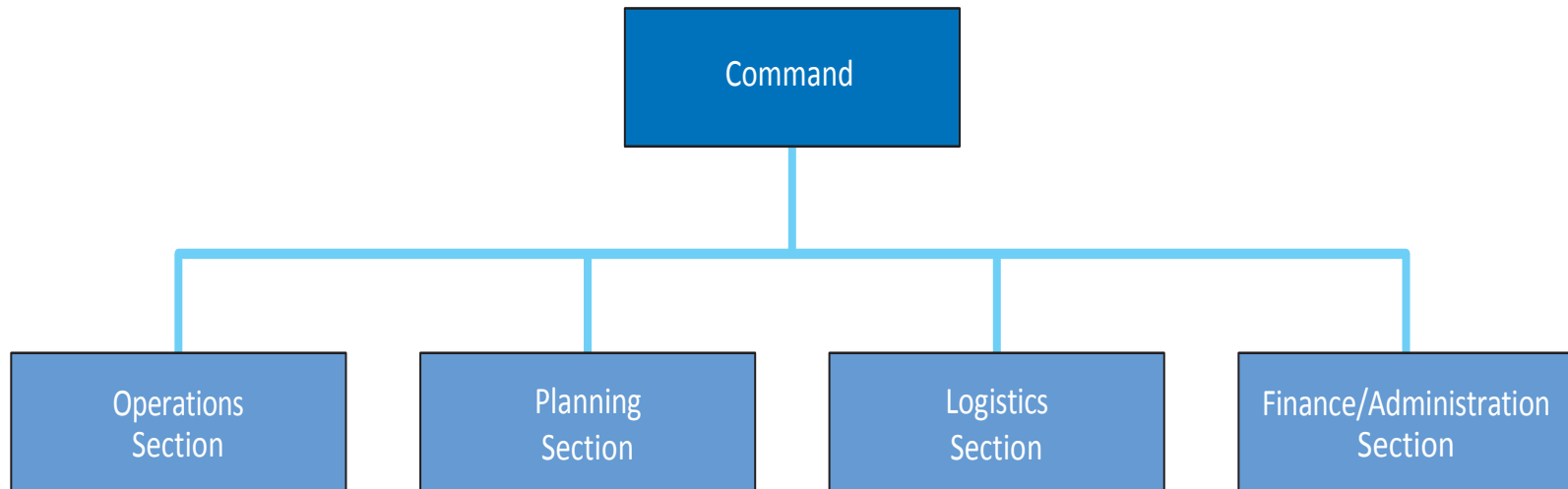


Government led or Industry led?



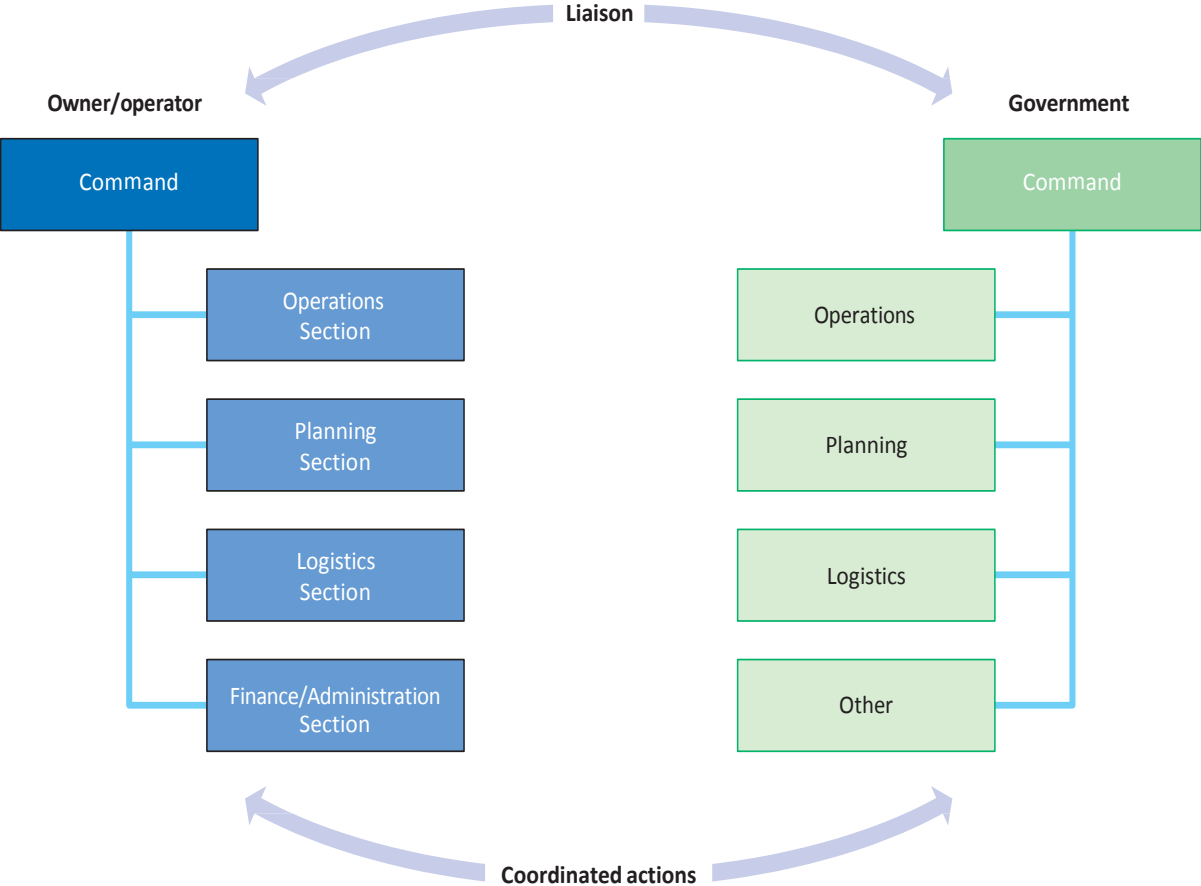
The Command Challenge

a) The “Single Command” structure



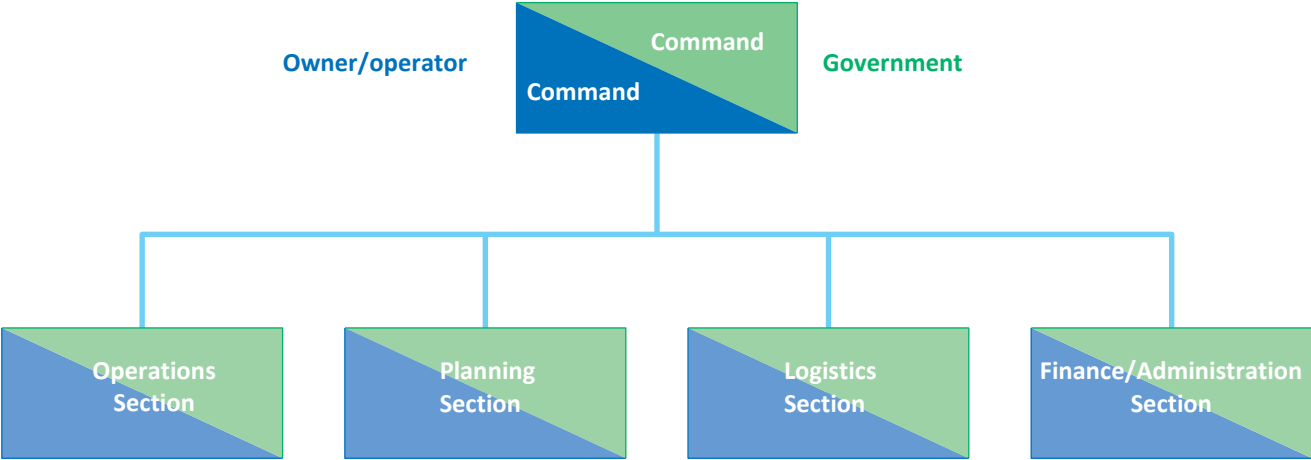
The Command Challenge

b) The "Coordinated Command" structure



The Command Challenge

c) The “Unified Command” structure



Fundamental questions for you to ask and answer

- How do you make a decision?
- Who is accountable?
- How quickly do you need to make decisions?

- Have you answered all of the above questions for external stakeholders?
 - Agencies
 - Regulators
 - Media

The need for ICS

- Our firm view is that ICS or an “ICS – like” approach is required to manage large amounts of equipment, people and transactions
- However our experience with IMS and ICS is that ICS doesn’t translate well into coordinated command
- We have designed an IMS which is “ICS - like” and recognizes multiple command and coordination challenges

